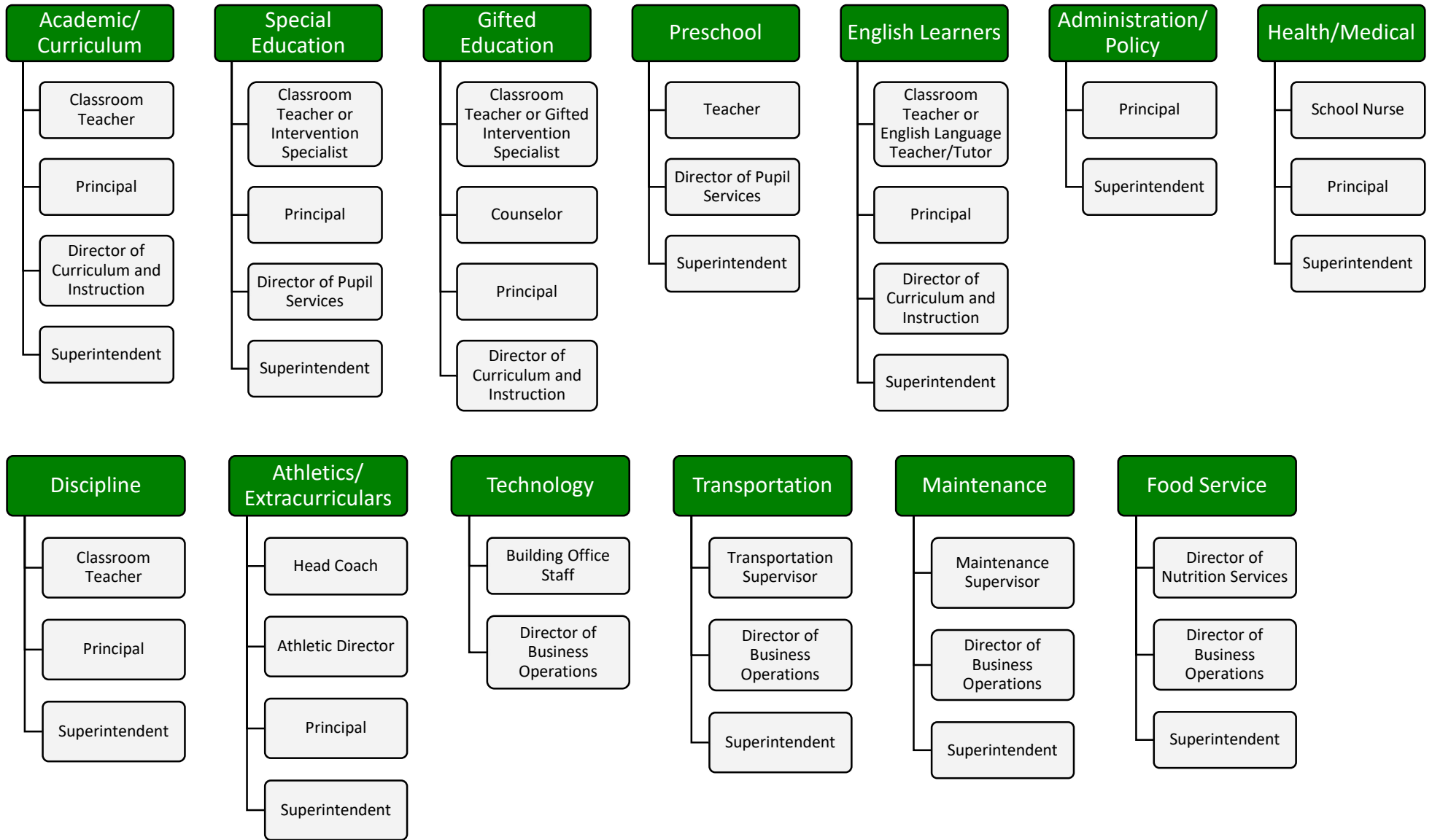


Columbia Local Schools - Who Do I Contact?



| Contact Information: | | | | | |
|--|--|----------------|--|--|----------------|
| Graig Banseck, Superintendent | gbanseck@clsdraiders.org | (440) 236-5008 | Jason Ashworth, Maintenance Supervisor | jashworth@clsdraiders.org | (440) 236-5008 |
| Patricia Eddy, Treasurer | peddy@clsdraiders.org | (440) 236-5008 | Elaine Webber, Director of Nutrition Services | ewebber@clsdraiders.org | (440) 236-5741 |
| Carrie Atkinson, Director Curriculum/Instruction | catkinson@clsdraiders.org | (440) 236-5008 | Toni Filut, CMS Principal | tfilut@clsdraiders.org | (440) 236-5741 |
| Jamie Maassen, Director of Pupil Services | jmaassen@clsdraiders.org | (440) 236-5021 | Carla Molnar, Copopa Principal | cmolnar@clsdraiders.org | (440) 236-5020 |
| Troy Bunner, Director of Business Operations | tbunner@clsdraiders.org | (440) 236-5008 | Brian Siftar, CHS Principal | bsiftar@clsdraiders.org | (440) 236-5001 |
| Al Cantrell, Transportation Supervisor | acantrell@clsdraiders.org | (440) 236-8222 | Jason Ward, CHS Asst. Principal, Athletic Dir. | jward@clsdraiders.org | (440) 236-1245 |
| Mindi Porter, School Nurse | mporter@clsdraiders.org | (440) 236-5020 | Emily Figliano, Director of Wellness and Support | efigliano@clsdraiders.org | (440) 236-5741 |