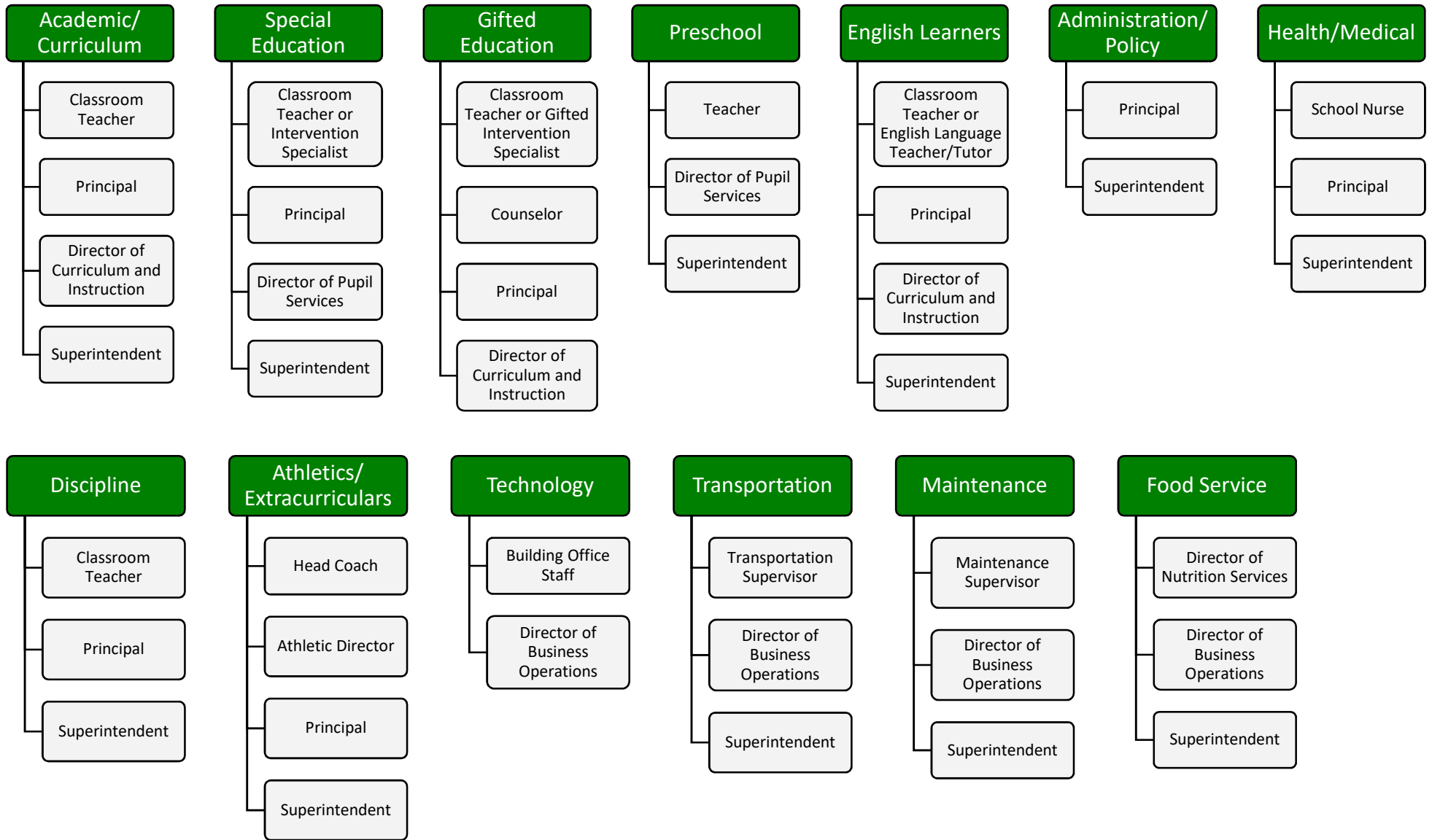


Columbia Local Schools - Who Do I Contact?



Contact Information:

Graig Banseck, Superintendent	gbanseck@clsdraiders.org	(440) 236-5008	Jason Ashworth, Maintenance Supervisor	jashworth@clsdraiders.org	(440) 236-5008
Patricia Eddy, Treasurer	peddy@clsdraiders.org	(440) 236-5008	Elaine Webber, Director of Nutrition Services	ewebber@clsdraiders.org	(440) 236-5741
Carrie Atkinson, Director Curriculum/Instruction	catkinson@clsdraiders.org	(440) 236-5008	Toni Filut, CMS Principal	tfilut@clsdraiders.org	(440) 236-5741
Judy Skoczen, Director of Pupil Services	jskoczen@clsdraiders.org	(440) 236-5021	Carla Molnar, Copopa Principal	cmolnar@clsdraiders.org	(440) 236-5020
Troy Bunner, Director of Business Operations	tbunner@clsdraiders.org	(440) 236-5008	Sean Lynch, CHS Principal	slynch@clsdraiders.org	(440) 236-5001
Al Cantrell, Transportation Supervisor	acantrell@clsdraiders.org	(440) 236-8222	Jeff Jump, CHS Asst. Principal, Athletic Director	jjump@clsdraiders.org	(440) 236-1245
Mindi Porter, School Nurse	mporter@clsdraiders.org	(440) 236-5020			